

 **Demat'Box**[®]
by *plustek*



Professional Document Scanner

With Network Capabilities

Plustek Q30 for DEMAT'BOX

plustek

Plustek Q30 for Demat'Box is a powerful scanning system that is designed to process receipts, invoices, legal documents, IDs, business cards up to 60 images per minute. The four simple buttons under the display allow users to navigate the system effortlessly and complete their tasks efficiently.

Plustek Q30 for DEMAT'BOX



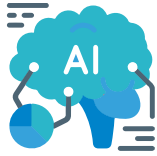
- Features:**
- Duplex scanning speed with advanced image processing up to 60 images per minute
 - 50-sheet Automatic Document Feeder (ADF)
 - 4 intuitive touch buttons
 - Ethernet and Wi-Fi connectivity
 - Demat'Go App available for smartphone scanning®
 - Ultrasonic sensor prevents paper jamming and page skipping
 - Plug-and-play with the Demat'Box® solutions



Seamless operation

Comes with customizable buttons and intuitive design for scanning.

No laptop or desktop computers needed; the Demat'Box® is a standalone network scanner that can process different sizes of documents up to A4.



Intelligent Image Processing ⁽¹⁾

A wide variety of intelligent image processing features that generate high-quality images Easy file naming and redirecting via the Demat'Box Connect Portal.

Document splitting, blank page removal, and file-size reduction also save you the hassle of rearranging files.



Connector Services

Demat'Box connected services allow users to directly send files to destinations they desire in the cloud.



General Information

ADF Network Scanner

Display

2.8 inch TFT LCD display with 262,000 Colors

Wi-Fi Interface

2.4GHz: IEEE 802.11b/g/n, 5GHz: IEEE802.11ac

Sensor & Light Source

CIS x2, LED

Wired Network Interface

Network Ethernet (10Base-T/100Base-TX/1000Base-TX)

Smartphone Application

Demat'Go

Scanning

Scanning Speed (A4, color and B&W)

Up to 60 ipm

Optical Resolution

Up to 600 x 600 dpi

Color Depth

Input: 48-bit
Output: 24-bit

Gray Scale

Input: 16-bit
Output: 8-bit

Functions

Image Processing ⁽¹⁾

Auto Resizing ; Contrast Improvement ; Blank Page Removal; Optimal Compression; Optimization for OCR; Document Splitting with Blank Page; OCR via ABBYY®

Protocols of Transmission ⁽²⁾

FTP/FTPS/SFTP/ DEMAT'LINK®/MAIL/ WebDAV/Drive SaaS

File Format ⁽²⁾

PDF

Multi-feed Detection with Ultrasonic Technology

Paper Handling

Automatic Document Feeder (ADF)

50 pages (70 g/m, A4)

Paper Thickness

0.08~0.28mm, Laminated board thickness up to 1.32mm

Acceptable Paper

Plain paper, paper thin, thick paper, paper recycled, business card, card plastic

Paper Sizes

Max.
216 x 356mm (8.5in x 14in)
Min.
13.2 x 13.2mm (0.52in x 0.52in)
Long paper:
216 x 5080 mm (8.5in x 200in)

Plastic Card

Length (ISO): 85.60mm
Width (ISO): 53.98mm

Acceptable Paper Weight

40 to 200 g/m

Connectivity (Mobile & Web)

Demat'Go® ⁽³⁾
Available on the App Store
and Google Play Store

Connect Portal ⁽⁴⁾
PC-free scanning
with FTP/FTPS/SFTP/
DEMAT'LINK®/MAIL/
WebDAV/Drive SaaS

Network Security

IPv4
DHCP, APIPA (AUTO IP),
DNS resolver, ICMP,
HTTP/HTTPS server,
Server Proxy

Network Security
SSL/TLS (HTTPS)

Wi-Fi
WPS

Accessories

Inside the Box
Scanner
Calibration Sheet
Cleaning Cloth
RJ45 Cable (1.5m)
Paper Tray
Adapter
Installation Guide

Optional Roller Kit
ADF friction pad
(22-CE501002RW10)
Lifespan: 100,000
pages or a year, whichever
comes first

**Optional A3 Carrier
Sheets x3**
(22-CE102002RP20)

Dimensions & Weight

With Carton
(W x D x H)
327.6 x 191 x 251mm ±2mm,
2.66kg

Scanner Size
(W x D x H)
263 x 127.5 x 148mm
(10.36 x 5.02 x 5.83 in),
2.09kg - 2.75kg

Capacity

Daily Volume ⁽¹⁾
Maximum 3,000 sheets

Monthly volume ⁽¹⁾
Maximum 90,000 sheets

Power

Input
24 Vdc/1.25 A

Energy Consumption
Operating: 26W
Ready mode: 8.6 W
Standby: 1.95W
Off: 0.1W

Noise Level
<60dB

Operating Environment
Humidity: 20 to 80%
5°C - 35°C (41°F - 95°F)

Storage Environment
Humidity: 10 to 90%
-20°C to 60°C
(-4°F to 140°F)

Certification

THIS

FCC

RoHS



⁽¹⁾ Capacity varies with paper weight

⁽²⁾ Requires internet connection

⁽³⁾ Requires additional activation

⁽⁴⁾ Requires a connection and functionalities of the Demat'Box Connect portal

